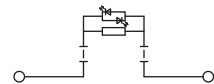


Screw Disconnect Terminal Blocks



CTR 4SI



Features of Fuse Terminal Blocks (CTR4SI/6SI/10SI)

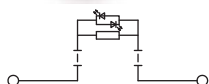
- Fuse terminal blocks can be used to fit fuses easily and quickly on the terminal rails (Ease of fault finding).
- Components as sensors, power supply units and conductors are protected by installing different fuses. (when the current flows through them).
- Suitable for broad range of cross-section and types of wires.
- Wires can be connected without any special preparation.
- An excellent vibration proof protection against loosening.
- Stable and low contact resistances.
- Easy mounting and dismantling from the terminal rail.

保險絲型接線座之特性 (CTR4SI/6SI/10SI)

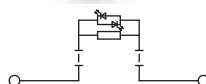
- 保險絲安裝及更換容易 (有利於故障診斷)
- 保護元件避免受電流衝擊而損毀
- 適合範圍寬廣的導線線徑
- 簡易的導線連接方式
- 優良的抗震防鬆設計
- 低且穩定的接觸電阻
- 接線座從軌道上安裝及拆卸容易

Specifications (產品規格)	4 mm ²		
Technical Data (技術參數)	Rated voltage / Rated current / Wire size		
UL	c 400V/15A/AWG 14-22		
CSA	400V/15A/AWG 14-22		
IEC	400V/15A/0.5-4 mm ²		
Insulating impulse voltage withstand / Pollution degree (額定衝擊電壓 / 污染等級)	6KV / 3		
Torque (lb-in) (扭緊力矩)	6		
Clamping Screw (M) (螺絲)	M3		
Insulation stripping length(mm) (剝線長度)	10-12 mm		
Material / Available Color (材質顏色)			
Rail Dimensions (導軌尺寸)	T / W / H (mm)		
For TS35x7.5	6 x 60 x 47.5 + 31.5 (CSI4)		
For TS35x15	6 x 60 x 55 + 31.5 (CSI4)		
Accessories (附件)	Cat. No.	Qty.	
End Bracket (終端擋板)	SEW35	50	
End Plate (擋板)	CEW35/2	50	
Partition (擋板 / 隔片)	CEP 1	50	
	CEP 2	50	
Comb Link (邊接式聯接件)	CQB 4/2	50	
	CQB 4/3	50	
	CQB 4/10	20	
Marking Tags (標記號)	W6 W6Z W6K	500	
	W8 W8Z W8K	400	
Test plug (測試插頭)		-	
Socket (測試插孔)		-	
Diode Plug (二極體插頭)	+ -	CSD4	25
	- +	CSD4	25
LED Fuse Type (顯示型保險絲插座) Insert	+ -	CSI4	25
Protection Cover (防觸蓋)		-	
Retaining Plates (中界板)		-	
Tool (工具)		DS3	

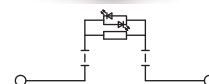
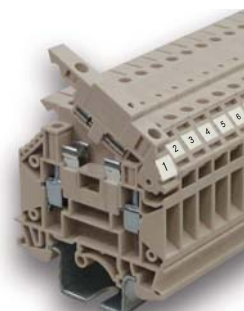
CTR 6SI



CTR 10SI

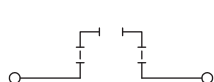
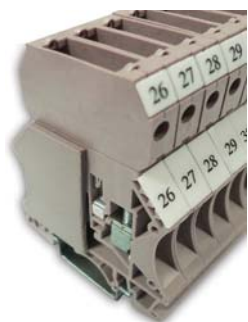


CTR4SI-EN

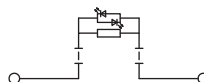


Specifications (產品規格)	6 mm ²	10 mm ²	4 mm ²
Technical Data (技術參數)	Rated voltage/Rated current/Wire size	Rated voltage/Rated current/Wire size	Rated voltage/Rated current/Wire size
UL	400 V/20A/AWG 8-20	400 V/ 20 A/AWG 6-16	UL [®] 600 V / 7.5A/AWG 10-22
CSA	400 V/20A/AWG 8-20	400 V/ 20 A/AWG 6-16	600 V / 7.5A/AWG 10-22
IEC	500V/20A/0.5-6 mm ²	500 V/20 A/1.5-10mm ²	800 V / 10A /0.5-4mm ²
Insulating impulse voltage withstand /Pollution degree (額定衝擊電壓 /污染等級)	8KV / 3	8KV / 3	6KV / 3
Torque (lb-in) (扭緊力矩)	14	19	7.7
Clamping Screw (M) (螺絲)	M4	M4	M3
Insulation stripping length(mm) (剝線長度)	12-14 mm	12-14 mm	10-12mm
Material/Available Color (材質顏色)			
Rail Dimensions (導軌尺寸)	T / W / H (mm)	T / W / H (mm)	T / W / H (mm)
For TS35x7.5	8 x 60 x 47.5 + 31.5(CSI6)	10 x 60 x 47.5 + 31.5(CSI10)	8 x 60 x 54.5
For TS35x15	8 x 60 x 55 + 31.5(CSI6)	10 x 60 x 55 + 31.5(CSI10)	8 x 60 x 62
Accessories (附件)	Cat. No. Qty.	Cat. No. Qty.	Cat. No. Qty.
End Bracket (終端擋板)	SEW35 50 CEW35/2 50	SEW35 50 CEW35/2 50	SEW 35 50 CEW 35/2 50
End Plate (擋板)	CEP 5 50	CEP 5 50	CEP 5 50
Partition (擋板/隔片)	CEP 2 50	CEP 2 50	
Comb Link (連接式聯接件)	CQB 6/2 50	CQB 10/2 50	CQB 6/2 50
	CQB 6/3 50	CQB 10/3 50	CQB 6/3 50
	CQB 6/10 20	CQB 10/10 20	CQB 6/10 50
MarkingTags (標記號)	W6 W6Z W6K 500 W8 W8Z W8K 400	W6 W6Z W6K 500 W8 W8Z W8K 400	W6 W6Z W6K 500 W8 W8Z W8K 500
	Test plug (測試插頭)	-	-
Socket (測試插孔)	-	-	-
Diode Plug (二極體插頭)	+ - CSD6 25	+ - CSD10 25	
	- + CSD6 25	- + CSD10 25	
LED Fuse Type (顯示型保險絲插座) Insert	CSI6 25	CSI10 25	
Protection Cover (防觸蓋)	-	-	-
Retaining Plates (中界板)	-	-	-
Tool (工具)	DS4	DS4	DS3

CTR 4SB



CTR 4SF



Specifications (產品規格)	4 mm ²	4 mm ²
Technical Data (技術參數)	Rated voltage/Rated current/Wire size	Rated voltage/Rated current/Wire size
UL	c us 600 V / 16A/AWG 12-22	c us 600 V / 15A/AWG 14-22
CSA	600 V / 16A/AWG 12-22	600 V / 15A/AWG 14-22
IEC	800 V / 10A /0.5-4mm ²	800 V / 10A /0.5-4mm ²
Insulating impulse voltage withstand /Pollution degree (額定衝擊電壓 /污染等級)	6KV / 3	6KV / 3
Torque (lb-in) (扭緊力矩)	6	6
Clamping Screw (M) (螺絲)	M3	M3
Insulation stripping length(mm) (剝線長度)	10-12mm	10-12mm
Material/Available Color (材質顏色)		
Rail Dimensions (導軌尺寸)	T / W / H (mm)	T / W / H (mm)
For TS35x7.5	8 x 60 x 54.5	8 x 60 x 54.5
For TS35x15	8 x 60 x 62	8 x 60 x 62
Accessories (附件)	Cat. No. Qty.	Cat. No. Qty.
End Bracket (終端擋板)	SEW 35 50 CEW 35/2 50	SEW 35 50 CEW 35/2 50
End Plate (擋板)	CEP 5 50	CEP 5 50
Partition (擋板/隔片)		
Comb Link (邊接式聯接件)	CQB 6/2 50 CQB 6/3 50 CQB 6/10 50	CQB 6/2 50 CQB 6/3 50 CQB 6/10 50
MarkingTags (標記號)	W6 W6Z W6K 500 W8 W8Z W8K 500	W6 W6Z W6K 500 W8 W8Z W8K 500
Test plug (測試插頭)	-	-
Socket (測試插孔)	-	-
Diode Plug (二極體插頭)	+ - CSD4 25 - + CSD4 25	CSD4 25 CSD4 25
LED Fuse Type (顯示型保險絲插座) Insert	+ - CSI4 25	CSI4 25
Protection Cover (防觸蓋)	-	-
Retaining Plates (中界板)	-	-
Tool (工具)	DS3	DS3