

HC16 series

■ **Features**

1. If it need, the number of the steps can be added to 12 Max.
2. Same application, the different assembly types can be selected.

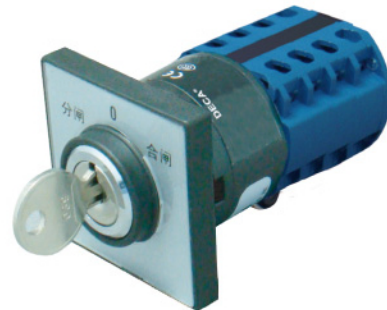
■ **The general descriptions of switch type.** (Please specify the exact code according to your real requirement or deliver the detailed diagram to make sure your desired.)

Series Code	Electrical Current A	Mounting type	Size of front plate	Switching angle and marking	Wiring Marking	Type of operator	Handle color	Terminal Block
DGE	16	S	4	9GD	212	N	B	A
GE General cam	10	C Center	0- None	The first digit is for angle distance positioning 3(30°),4(45°) 6(60°),9(90°)	The first digit specifies switching angle section. 1~9,A~C(10~12)	N Standard	B Black	A Internal Clamp
MS Multi-Step cam	16	S Screw	3-30 □	The second digit specifies initial position of angle.	The second digit specifies step no. of main body. 1~9,A~C(10~12)	S Short handle	R Red	B External Clamp
CO Change-over and transfer	25	B Betel	4-48 □	The third digit specifies end position of angle.	The third digit specifies series no.. 1~9,A~Z	L Long handle		C Internal Plug
OF on/off cam	63	R Rail	6-64 □			K Keylock G Safe		D External Plug
Referred Page NO		P50	P52	P54	P56	P58	P58	P60

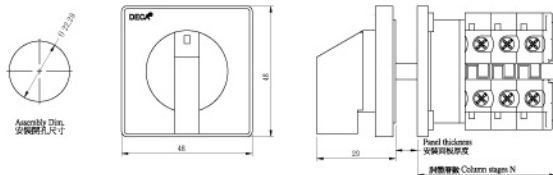
 **Screw mounting**

With plate and general handle

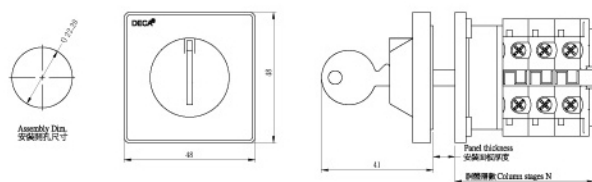
With plate and key handle



Shape dimension



Shape dimension



HC16 series

Single hole mounting

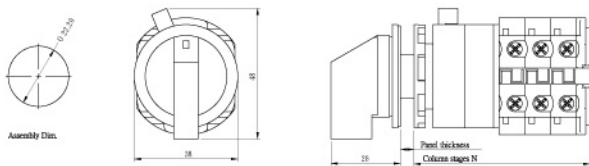
Without plate and general handle



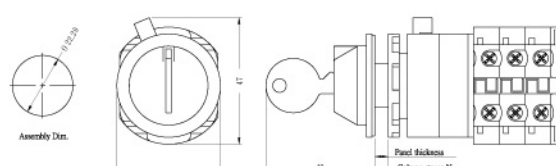
Without plate and key handle



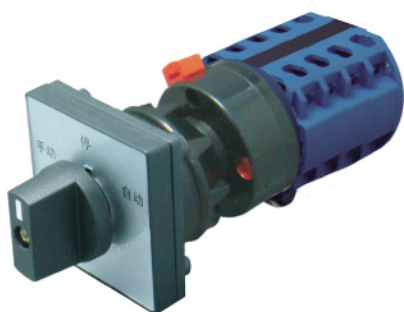
Shape dimension



Shape dimension



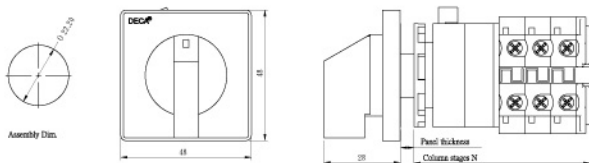
With plate and general handle



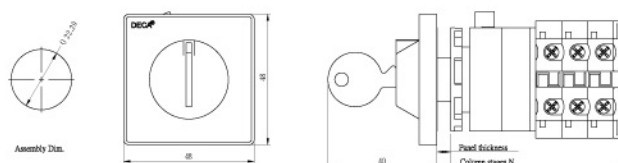
With plate and key handle



Shape dimension



Shape dimension



HC16 series

Base mounting

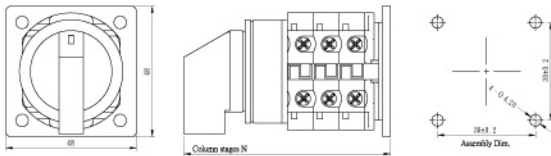
Without plate and general handle



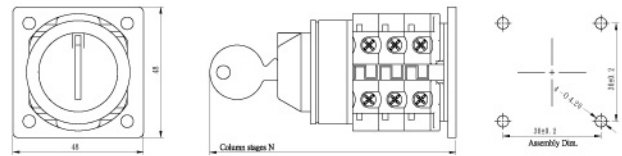
Without plate and key handle



Shape dimension



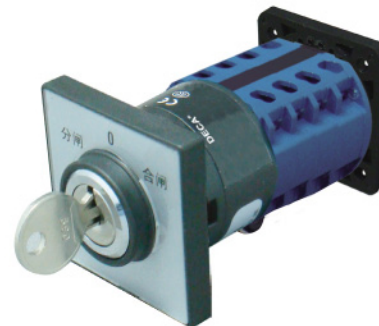
Shape dimension



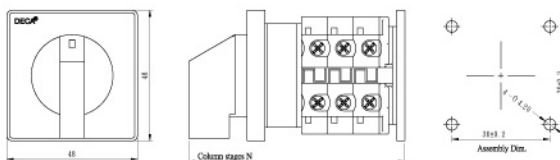
With plate and general handle



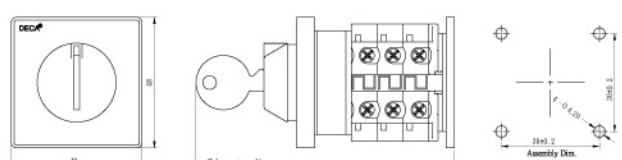
With plate and key handle



Shape dimension



Shape dimension



HC16 series base

 Rail mounting

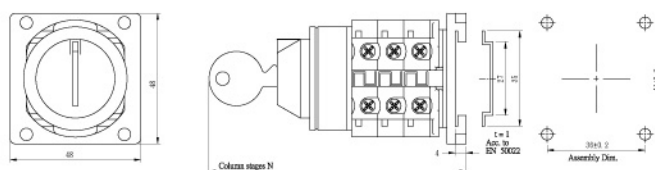
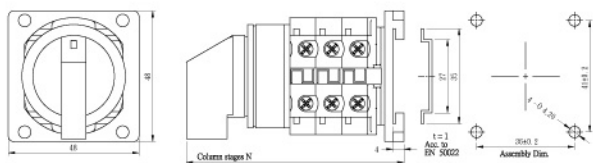
Without plate and general handle)

Without plate and key handle)



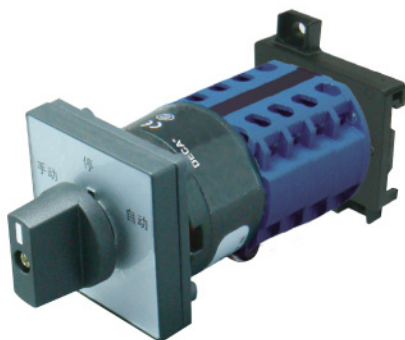
Shape dimension

Shape dimension



With plate and general handle)

With plate and key handle)



Shape dimension

Shape dimension

