

HC 25 series

■ **Features**

1. If it need, the number of the steps can be added to 12 Max.
2. Same application, the different assembly types can be selected.

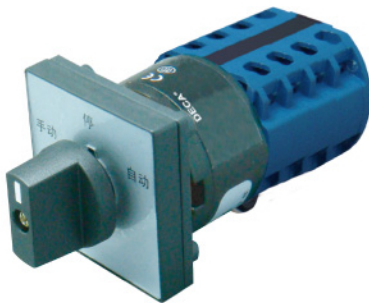
■ **The general descriptions of switch type.** (Please specify the exact code according to your real requirement or deliver the detailed diagram to make sure your desired.)

Series Code	Electrical Current A	Mounting type	Size of front plate	Switching angle and marking	Wiring Marking	Type of operator	Handle color	Terminal Block
DGE	16	S	4	9GD	212	N	B	A
GE General cam	10 16	C Center S Screw	0- None 3-30 □ 4-48 □ 6-64 □	The first digit is for angle distance positioning 3(30°),4(45°) 6(60°),9(90°) The second digit specifies initial position of angle. The third digit specifies end position of angle.	The first digit specifies switching angle section. 1~9,A~C(10~12) The second digit specifies step no. of main body. 1~9,A~C(10~12) The third digit specifies series no. 1~9,A~Z	N Standard S Short handle L Long handle K Keylock G Safe	B Black R Red	A Internal Clamp B External Clamp C Internal Plug D External Plug
MS Multi-Step cam	25	B Betel R Rail						
CO Change-over and transfer	63							
OF on/off cam								
Referred Page NO		P50	P52	P54	P56	P58	P58	P60

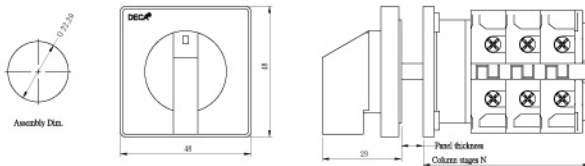
 **Screw mounting**

With plate and general handle

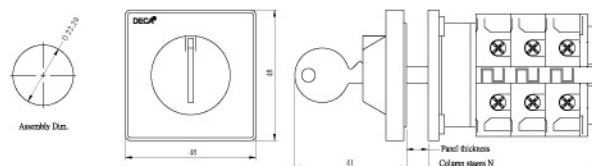
With plate and key handle



Shape dimension



Shape dimension



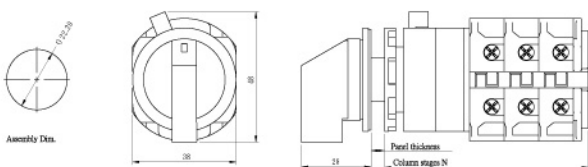
HC series

Single hole mounting

Without plate and general handle



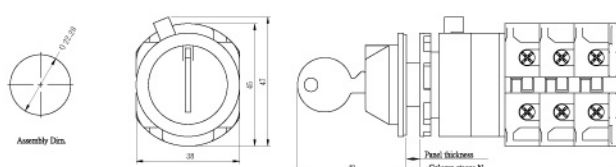
Shape dimension



Without plate and key handle



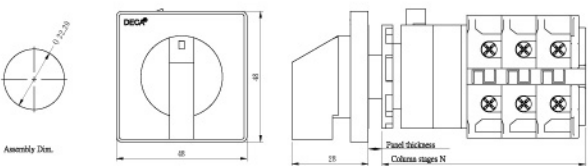
Shape dimension



With plate and general handle



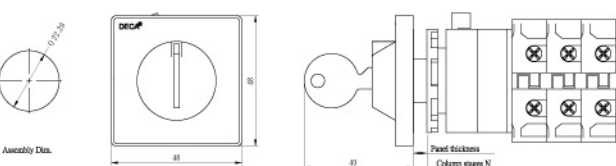
Shape dimension



With plate and key handle



Shape dimension



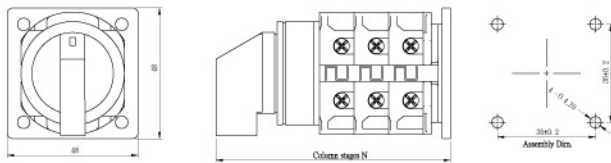
HC 25 series

Base mounting

Without plate and general handle



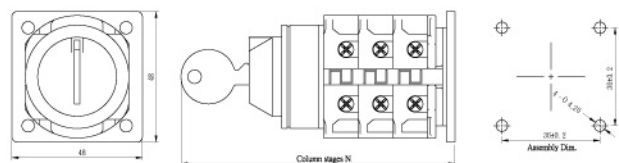
Shape dimension



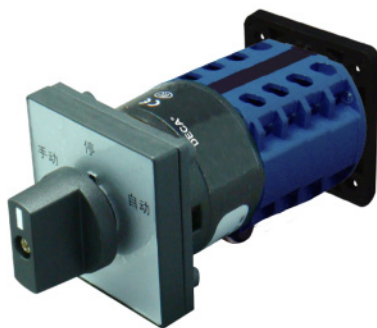
Without plate and key handle



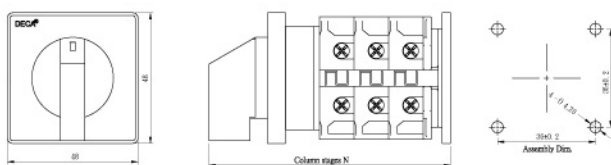
Shape dimension



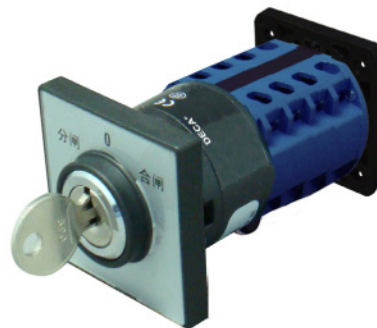
With plate and general handle



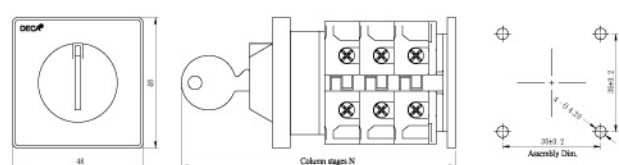
Shape dimension



With plate and key handle



Shape dimension



HC 25 series base

 Rail mounting

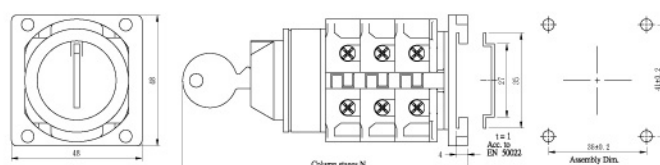
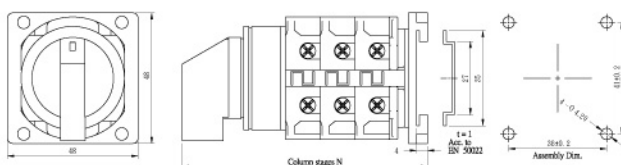
Without plate and general handle

Without plate and key handle



Shape dimension

Shape dimension



With plate and general handle

With plate and key handle



Shape dimension

Shape dimension

