

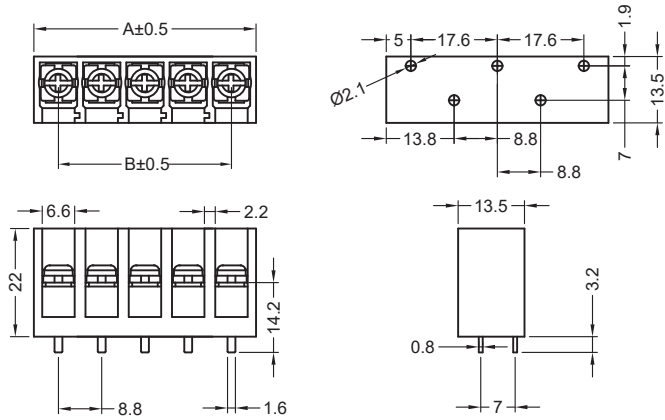
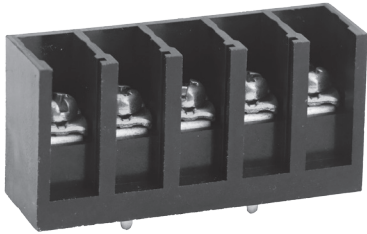
.346" PCB Tri-Barrier Terminal Blocks

TYPE:T4B

Pitch: 8.8 mm

T4B-BJ1Q05SZ

Terminal style:BJ1Q



Poles	2	3	4	5	6	7	8	9	10	11	12	13	14	15	16
A(mm)	18.80	27.60	36.40	45.20	54.00	62.8	71.60	80.40	89.20	98.00	106.80				
B(mm)	8.80	17.60	26.40	35.20	44.00	52.8	61.60	70.40	79.20	88.00	96.80				
Poles	17	18	19	20	21	22	23	24	25	26	27	28	29	30	
A(mm)															
B(mm)															