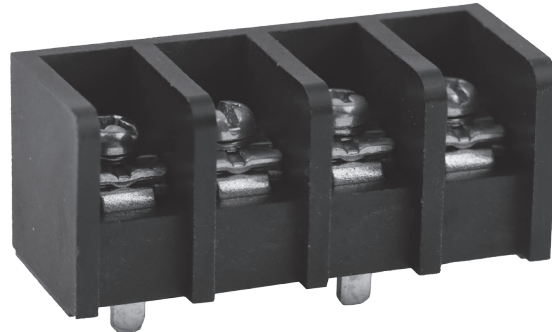


## TYPE:T4D (貫通式端子台) Modular (モジュール式)



Pitch:12.7mm



### ORDER GUIDE(注文方法):

# T4D B I10 - 04

Body(本体)	Terminal style(端子スタイル)	Poles(極数)
B: 取付穴・カバー無し、壁有り (Barrier Ends)	I10  J10	02 ..... 28

### SPECIFICATION(規格,仕様):

Terminal :	Brass, Tin plated, 1.6 t	端子金具 :	黄銅板 ハンダメッキ, 1.6 t
Insulator body :	PBT(UL94V-0), Black	本体 :	PBT(UL94V-0), 黒色
Screw :	M4.0, steel, Zinc plated	端子ネジ :	M4.0, 鉄ニッケルメッキ
Operation temperatures :	-40° C to +120° C	使用温度範囲 :	-40° C to +120° C
Rated current :	45Amp 600V	定格 :	45Amp 600V
Insulation withstands volt :	2200V 1min	耐電圧 :	2200V 一分間
Insulation resistance :	2000MΩ at DC 500V	絶縁抵抗 :	2000MΩ at DC 500V
PCB hole Dia :	ø 4.0mm~ø 4.2mm	基板穴径 :	ø 4.0mm~ø 4.2mm
Wire range :	8~18 AWG	適合電線 :	8~18 AWG
Screw torque :	15.9 lb-in	締付トルク :	15.9 lb-in
	Screw with washer		ワッシャー付ネジ

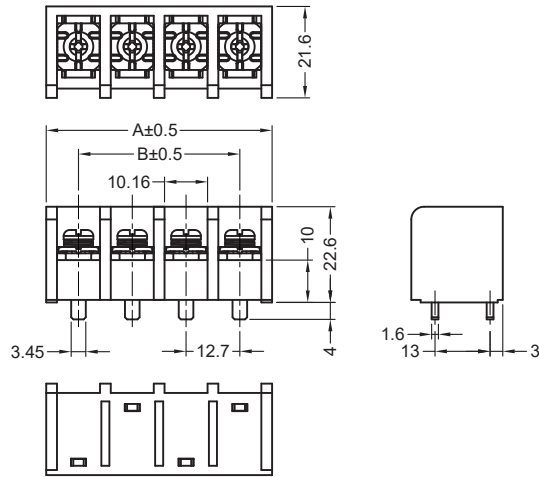
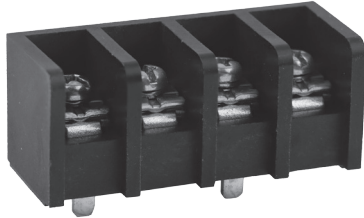
# .500" PCB Tri-Barrier Terminal Blocks

TYPE:T4D

Pitch:12.7mm

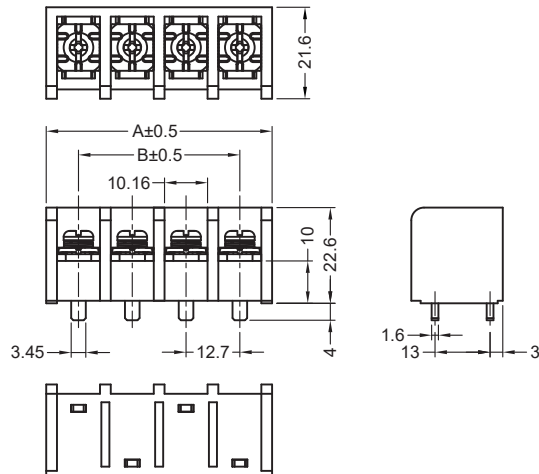
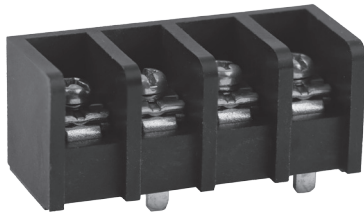
## T4D-BI10-04

Terminal style:I10



## T4D-BJ10-04

Terminal style:J10



Poles	2	3	4	5	6	7	8	9	10	11	12	13	14	15	16
A(mm)	29.94	40.64	53.34	66.04	78.74	91.44	104.14	116.84	129.54	142.24	154.94	167.64	180.34	193.04	205.74
B(mm)	12.70	25.40	38.10	50.80	63.50	76.20	88.90	101.60	114.30	127.00	139.70	152.40	165.10	177.80	190.50
Poles	17	18	19	20	21	22	23	24	25	26	27	28	29	30	
A(mm)	218.44	231.14													
B(mm)	203.20	215.90													